

Low Secondary Electron Yield Carbon Coatings for E-cloud Mitigation in Modern Particle Accelerators

IPAC '10, Kyoto Japan

Christina Yin Vallgren

**A. Ashraf, S. Calatroni, P. Chiggiato, P. Costa Pinto, H.P. Marques
H. Neupert, M. Taborelli, W. Vollenberg, I. Wevers, K. Yaqub**
Vacuum, Surfaces and Coatings Group (VSC), TE-department
CERN, CH-1211, Geneva, Switzerland

May 26 2010



Outline

1 Motivation

- Electron Cloud Build-Up
- SPS-U: Super Proton Synchrotron Upgrade
- New solution!? → Amorphous Carbon Coating

2 Experiments

- Experiments in the lab: Thin Film Coatings + SEY measurements
- Implementation in the SPS: Coatings + E-cloud experiments
- Ageing observation of a-C coating: in the lab + in the SPS

3 Applications and Conclusions

- Application on the dipole magnets in the SPS
- Summary

Outline

- 1 Motivation
 - Electron Cloud Build-Up
 - SPS-U: Super Proton Synchrotron Upgrade
 - New solution!? → Amorphous Carbon Coating
- 2 Experiments
 - Experiments in the lab: Thin Film Coatings + SEY measurements
 - Implementation in the SPS: Coatings + E-cloud experiments
 - Ageing observation of a-C coating: in the lab + in the SPS
- 3 Applications and Conclusions
 - Application on the dipole magnets in the SPS
 - Summary

Electron Cloud Build-Up

In the beam pipe of high-energy proton or positron particle accelerators, an '**Electron Cloud**' can be generated:

- by residual gas ionization.
- by photoemission from synchrotron radiation.
- by subsequent secondary electron emission via a beam-induced multipactoring process.

The electron cloud leads to:

- dynamic pressure rise (electron stimulated desorption).
- transverse emittance blow-up (bunch expansion).
- thermal load in cryogenic vacuum systems.
- fast or slow beam losses.

The goal of this work

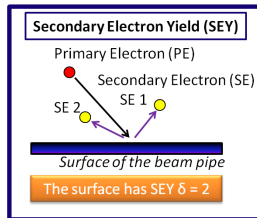
SPS-U: make the SPS able to deliver the above nominal beams to LHC and reach maximum luminosity.

Find a solution to eliminate e-cloud in the SPS, which

- can be implemented in the present SPS-dipoles
- does not require bake-out
- is robust against air venting (maintenance, installation...)
- has a long life time

The condition to avoid e-cloud in SPS dipoles with nominal LHC beam is (G.Rumolo et al.)

$$\delta_{max} < 1.3$$



Possible remedies for the electron cloud in the beam pipe:

- Low Secondary Electron Yield (SEY) thin-film coatings
- surface conditioning
- clearing electrodes
- chamber with grooves or slots

Ti-Zr-V film coating (implemented in straight sections of LHC) have $\delta_{max} = 1.1$ after **activation** at temperature higher than **180°C** (24h). But they cannot be applied to the **SPS** because the SPS magnet vacuum chambers are **not bakeable**.

TiN works well under the effect of photon conditioning in situ.
But **no photons** in the **SPS**.

Which material to start with:

Known facts

- For air exposed stainless steel, Cu and Al $\delta_{max} > 2$.
- In the periodic system, elements with fewer electrons (on the left side) \Rightarrow lower SEY.
- Insulators have high SEY (electrons escape from deep layers).
- 'Beam scrubbed' surfaces are covered by more carbon (at least Cu and StSt).

Try Carbon, which has few electrons

- SEY of graphite is much lower than diamond, so try to make graphite-like coatings.
- Graphite is not very reactive, should be less affected by air exposure.
- Graphite-like Amorphous Carbon (a-C) Thin Film Coating.

Which material to start with:

Known facts

- For air exposed stainless steel, Cu and Al $\delta_{max} > 2$.
- In the periodic system, elements with fewer electrons (on the left side) \Rightarrow lower SEY.
- Insulators have high SEY (electrons escape from deep layers).
- 'Beam scrubbed' surfaces are covered by more carbon (at least Cu and StSt).

Try Carbon, which has few electrons

- SEY of graphite is much lower than diamond, so try to make graphite-like coatings.
- Graphite is not very reactive, should be less affected by air exposure.
- **Graphite-like Amorphous Carbon (a-C) Thin Film Coating.**

Outline

- 1 Motivation
 - Electron Cloud Build-Up
 - SPS-U: Super Proton Synchrotron Upgrade
 - New solution!? → Amorphous Carbon Coating
- 2 Experiments
 - Experiments in the lab: Thin Film Coatings + SEY measurements
 - Implementation in the SPS: Coatings + E-cloud experiments
 - Ageing observation of a-C coating: in the lab + in the SPS
- 3 Applications and Conclusions
 - Application on the dipole magnets in the SPS
 - Summary

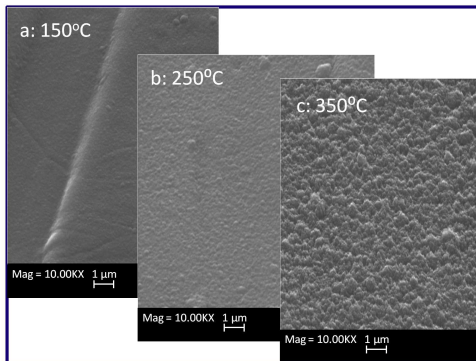
Surface morphology by SEM (Scanning electron microscope)

Amorphous Carbon Coating: DC magnetron sputtering

The SEM images of a-C coatings

Thicknesses from 50 nm to 1500 nm.

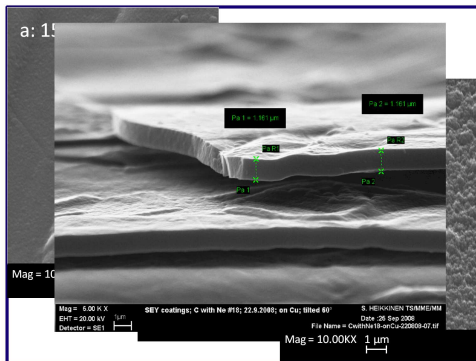
Variation of surface roughness with substrate coating temperatures.



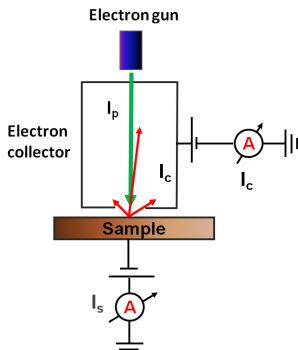
Surface morphology by SEM (Scanning electron microscope)

Amorphous Carbon Coating: DC magnetron sputtering
The SEM images of a-C coatings
Thicknesses from 50 nm to 1500 nm.

Variation of surface roughness with substrate coating temperatures.



Experimental setup for SEY measurement



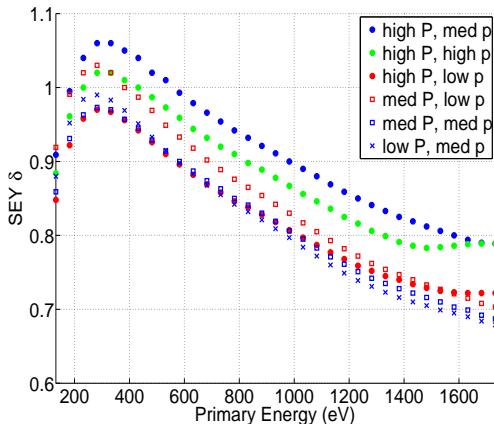
SEY δ is calculated as:

- $\delta = \frac{I_c}{I_c + I_s}$
- I_c : collector current.
- I_s : sample to ground current.
- I_p : $I_c + I_s$, the primary electron current (PE).

The electron dose during the measurement is calculated to be below $1 \times 10^{-6} \text{ C/mm}^2$.

The SEY as a function of PE

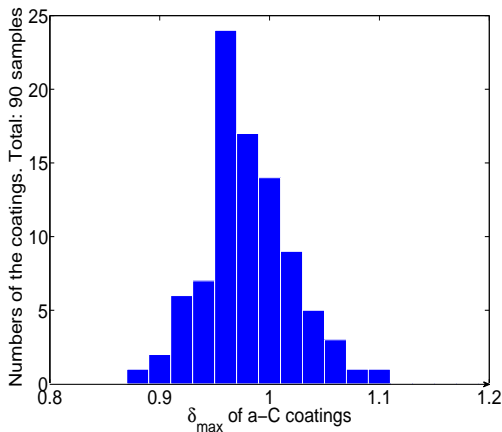
P: power, p: pressure



- Measured directly after extraction from the deposition chamber and transfer to the SEY apparatus through air.
- The precision of the presented SEY values is estimated to ± 0.03 .
- δ_{max} is between 0.9 and 1.1 and $E_{max} = 300$ eV. (not sensitive to coating parameters as pressure, power.)

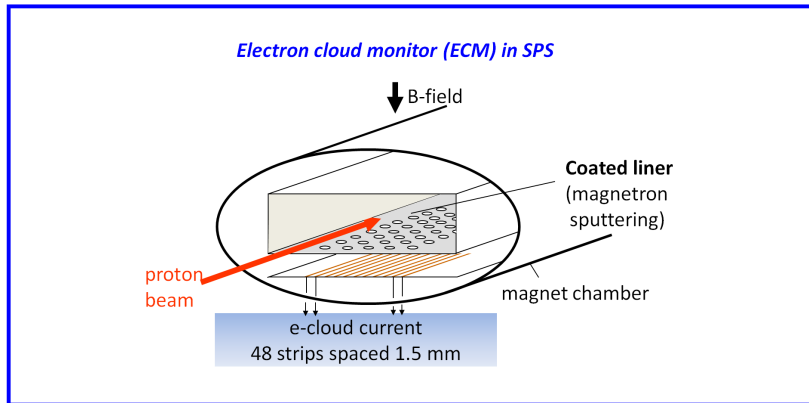
The SEY as a function of PE

P: power, p: pressure

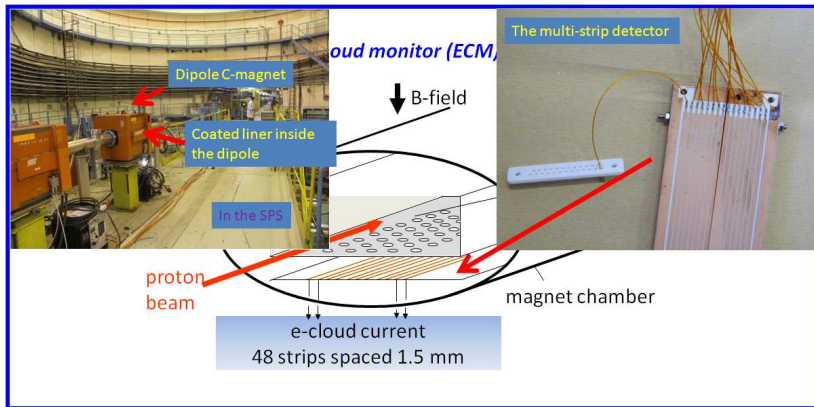


- Measured directly after extraction from the deposition chamber and transfer to the SEY apparatus through air.
- The precision of the presented SEY values is estimated to ± 0.03 .
- δ_{max} is between 0.9 and 1.1 and $E_{max} = 300$ eV. (not sensitive to coating parameters as pressure, power.)

Coating for the Electron Cloud Monitor in the SPS

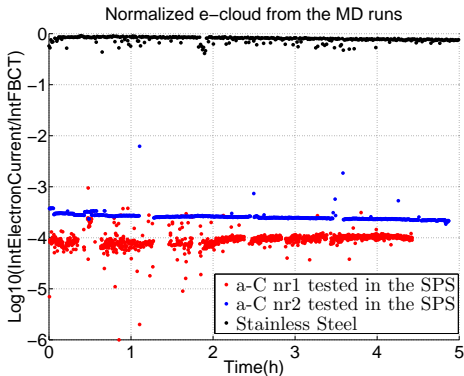


Coating for the Electron Cloud Monitor in the SPS

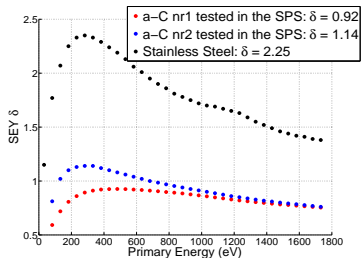


Electron Cloud Monitor (ECM)

- Normalized EC v.s time, measured by ECM in the SPS.
- 3-4 batches of nominal LHC beam. ($1.15 \cdot 10^{11}$ protons/bunch)



- SEY measurements in the lab.



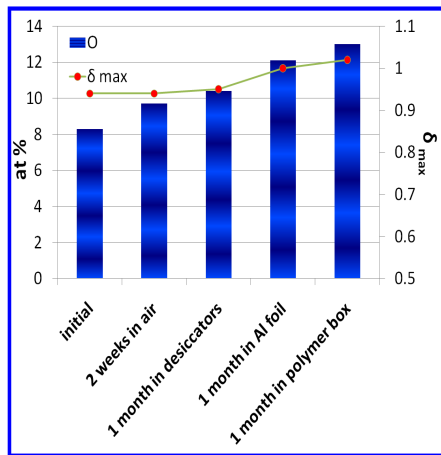
Observe!

- EC signal is 10^4 higher on StSt than a-C.
- Low SEY \Rightarrow Low electron current signal.

Ageing observation under different conditions in the lab

3 identical a-C samples have been stored in different conditions and compared after 1 month.

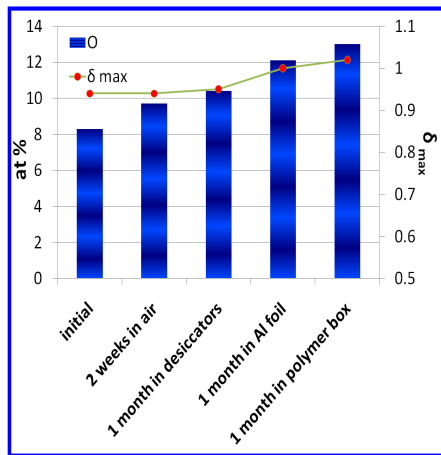
- By storing the sample in desiccators, the ageing seems to be suppressed completely.
- A weak correlation between the O content and the SEY can be seen in this sample.
- 1 month in air, still below the threshold value for the SPS, $\delta_{max} = 1.3$.**



Ageing observation under different conditions in the lab

3 identical a-C samples have been stored in different conditions and compared after 1 month.

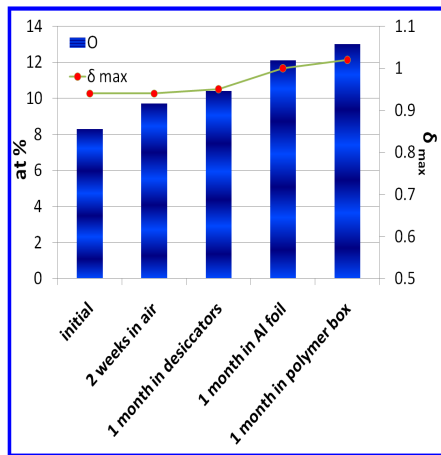
- By storing the sample in desiccators, the ageing seems to be suppressed completely.
- A weak correlation between the O content and the SEY can be seen in this sample.
- 1 month in air, still below the threshold value for the SPS, $\delta_{max} = 1.3$.



Ageing observation under different conditions in the lab

3 identical a-C samples have been stored in different conditions and compared after 1 month.

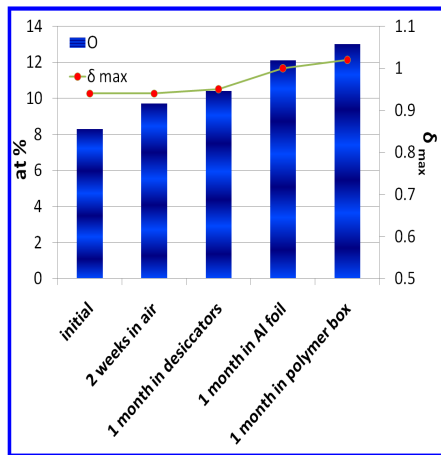
- By storing the sample in desiccators, the ageing seems to be suppressed completely.
- A weak correlation between the O content and the SEY can be seen in this sample.
- 1 month in air, still below the threshold value for the SPS, $\delta_{max} = 1.3$.



Ageing observation under different conditions in the lab

3 identical a-C samples have been stored in different conditions and compared after 1 month.

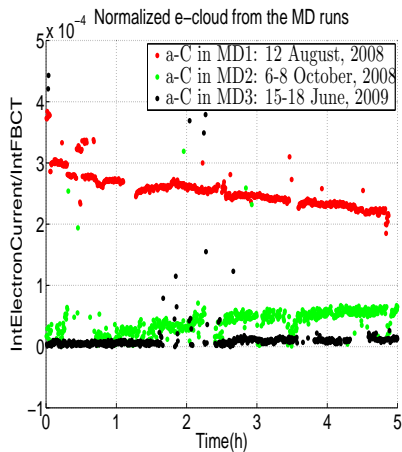
- By storing the sample in desiccators, the ageing seems to be suppressed completely.
- A weak correlation between the O content and the SEY can be seen in this sample.
- **1 month in air, still below the threshold value for the SPS, $\delta_{max} = 1.3$.**



Ageing observation of a-C in the SPS

One a-C coated liner has been tested during 3 Machine Development (MD) Runs with 3-4 batches of nominal LHC beam accelerated to 450 GeV/c.

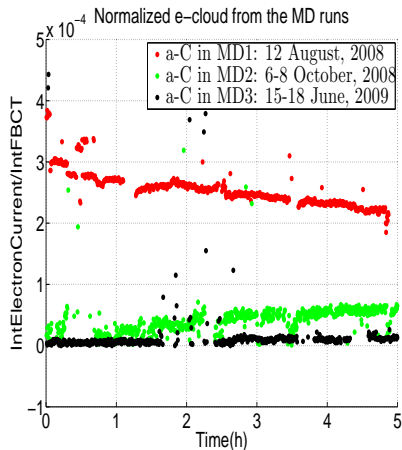
- Vertical unit: $\text{nC}/10^{10}$ protons per bunch
- The a-C coated liner was kept in the SPS for more than one year operation. (more than 2 months of venting, maintenance, installation...)
- No sign of ageing in the SPS.



Ageing observation of a-C in the SPS

One a-C coated liner has been tested during 3 Machine Development (MD) Runs with 3-4 batches of nominal LHC beam accelerated to 450 GeV/c.

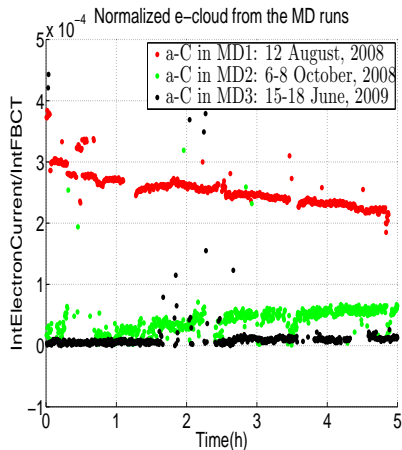
- Vertical unit: $\text{nC}/10^{10}$ protons per bunch
- The a-C coated liner was kept in the SPS for more than one year operation. (more than 2 months of venting, maintenance, installation...)
- No sign of ageing in the SPS.



Ageing observation of a-C in the SPS

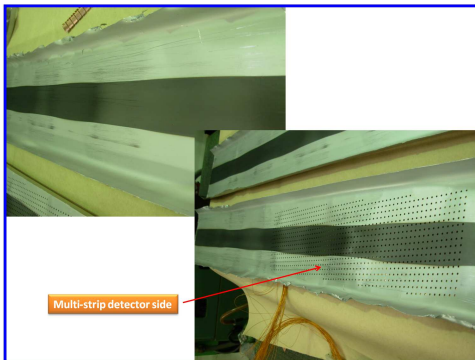
One a-C coated liner has been tested during 3 Machine Development (MD) Runs with 3-4 batches of nominal LHC beam accelerated to 450 GeV/c.

- Vertical unit: $\text{nC}/10^{10}$ protons per bunch
- The a-C coated liner was kept in the SPS for more than one year operation. (more than 2 months of venting, maintenance, installation...)
- **No sign of ageing in the SPS.**



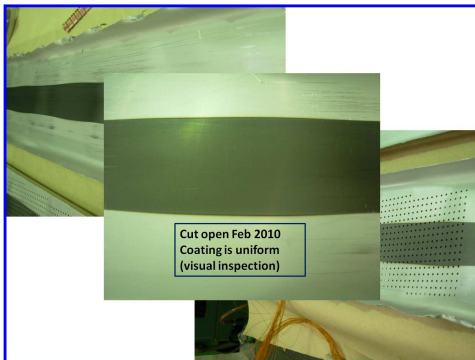
Inspection of one a-C liner extracted from the SPS

- One a-C coated liner has been tested during 5 Machine Development (MD) Runs in 2009, with 3-4 batches of nominal LHC beam accelerated to 450 GeV/c.
- Inserted in SPS in March 2009, and extracted in February 2010 and inspected.



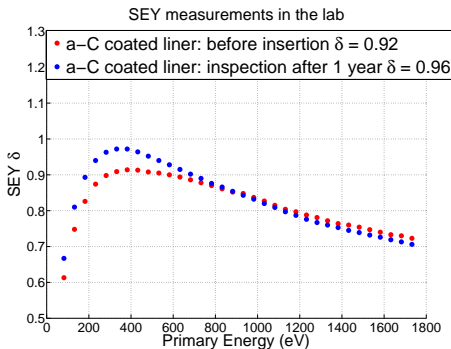
Inspection of one a-C liner extracted from the SPS

- One a-C coated liner has been tested during 5 Machine Development (MD) Runs in 2009, with 3-4 batches of nominal LHC beam accelerated to 450 GeV/c.
- Inserted in SPS in March 2009, and extracted in February 2010 and inspected.



Inspection of one a-C liner extracted from the SPS

- One a-C coated liner has been tested during 5 Machine Development (MD) Runs in 2009, with 3-4 batches of nominal LHC beam accelerated to 450 GeV/c.
- Inserted in SPS in March 2009, and extracted in February 2010 and inspected.



Outline

- 1 Motivation
 - Electron Cloud Build-Up
 - SPS-U: Super Proton Synchrotron Upgrade
 - New solution!? → Amorphous Carbon Coating
- 2 Experiments
 - Experiments in the lab: Thin Film Coatings + SEY measurements
 - Implementation in the SPS: Coatings + E-cloud experiments
 - Ageing observation of a-C coating: in the lab + in the SPS
- 3 Applications and Conclusions
 - Application on the dipole magnets in the SPS
 - Summary

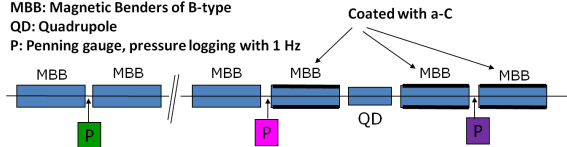
Three Magnetic Benders of B-type (MBB) have been coated with a-C coating

Schematic drawing of the coated and uncoated magnets in the SPS

MBB: Magnetic Benders of B-type

QD: Quadrupole

P: Penning gauge, pressure logging with 1 Hz



- Microwave transmission measurements detected e-cloud related signal in the coated and uncoated magnets. by S. Federmann et al (Poster ID: TUPEA076)
- Dynamic pressure rise used to monitor the behavior of the coated and uncoated magnets. by C. Yin Vallgren et al (Poster ID: TUPD048)

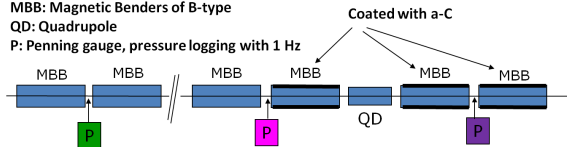
Three Magnetic Benders of B-type (MBB) have been coated with a-C coating

Schematic drawing of the coated and uncoated magnets in the SPS

MBB: Magnetic Benders of B-type

QD: Quadrupole

P: Penning gauge, pressure logging with 1 Hz



- **Microwave transmission measurements detected e-cloud related signal in the coated and uncoated magnets.** by S. Federmann et al (Poster ID: TUPEA076)
- **Dynamic pressure rise used to monitor the behavior of the coated and uncoated magnets.** by C. Yin Vallgren et al (Poster ID: TUPD048)

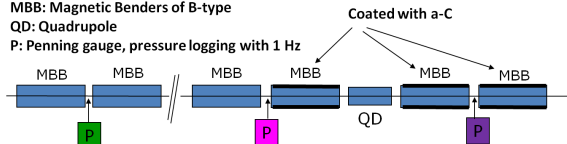
Three Magnetic Benders of B-type (MBB) have been coated with a-C coating

Schematic drawing of the coated and uncoated magnets in the SPS

MBB: Magnetic Benders of B-type

QD: Quadrupole

P: Penning gauge, pressure logging with 1 Hz



- **Microwave transmission measurements detected e-cloud related signal in the coated and uncoated magnets.** by S. Federmann et al (Poster ID: TUPEA076)
- **Dynamic pressure rise used to monitor the behavior of the coated and uncoated magnets.** by C. Yin Vallgren et al (Poster ID: TUPD048)

Summary!!

- Magnetron sputtered a-C film is a potential solution to eliminate e-cloud.
- especially in an un-bakeable accelerator as SPS.
- Future activities:
 - Study of ageing with storage in different atmospheres.
 - Modifying the coating system in order to find a solution to coat the dipole magnets with the best quality of a-C coating.
- More details can be found in *Low Secondary Electron Yield Carbon Coatings for Electron-cloud Mitigation in Modern Particle Accelerators* and *Amorphous Carbon Coatings for the Mitigation of Electron Cloud in the CERN SPS* by Christina Yin Vallgren et al (WEOAMH03, TUPD048).

Summary!!

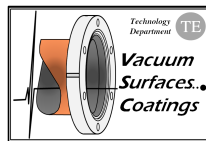
- Magnetron sputtered a-C film is a potential solution to eliminate e-cloud. ✓
- especially in an un-bakeable accelerator as SPS.
- Future activities:
 - Study of ageing with storage in different atmospheres.
 - Modifying the coating system in order to find a solution to coat the dipole magnets with the best quality of a-C coating.
- More details can be found in *Low Secondary Electron Yield Carbon Coatings for Electron-cloud Mitigation in Modern Particle Accelerators* and *Amorphous Carbon Coatings for the Mitigation of Electron Cloud in the CERN SPS* by Christina Yin Vallgren et al (WEOAMH03, TUPD048).

Summary!!

- Magnetron sputtered a-C film is a potential solution to eliminate e-cloud.
- especially in an un-bakeable accelerator as SPS.
- Future activities:
 - Study of ageing with storage in different atmospheres.
 - Modifying the coating system in order to find a solution to coat the dipole magnets with the best quality of a-C coating.
- More details can be found in ***Low Secondary Electron Yield Carbon Coatings for Electron-cloud Mitigation in Modern Particle Accelerators*** and ***Amorphous Carbon Coatings for the Mitigation of Electron Cloud in the CERN SPS*** by Christina Yin Vallgren et al (WEOAMH03, TUPD048).

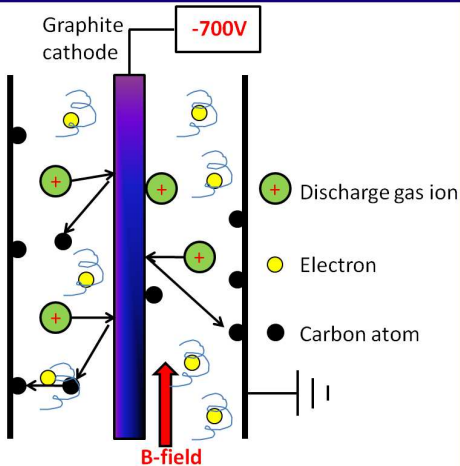
Many thanks to all the members of the SPS-U Study team
handed by E .Shaposhnikova!

Thanks for your attention ! and Questions



Backup Slide

Cylindrical configuration (Lab samples)



Backup Slide

Coating configuration - DC magnetron sputtering

Different coating configurations were used:

- Cylindrical tube with graphite rod as shown (for lab measurements)
- Liner in tube with 4 graphite rods (for e-cloud monitors, will be explained later)
- Multi-electrode geometry in MBB magnets (for SPS dipoles)

Different discharge gases (Ne, Kr, Ar) and different coating parameters (Temperature of substrate, discharge gas pressure, power) can be used.